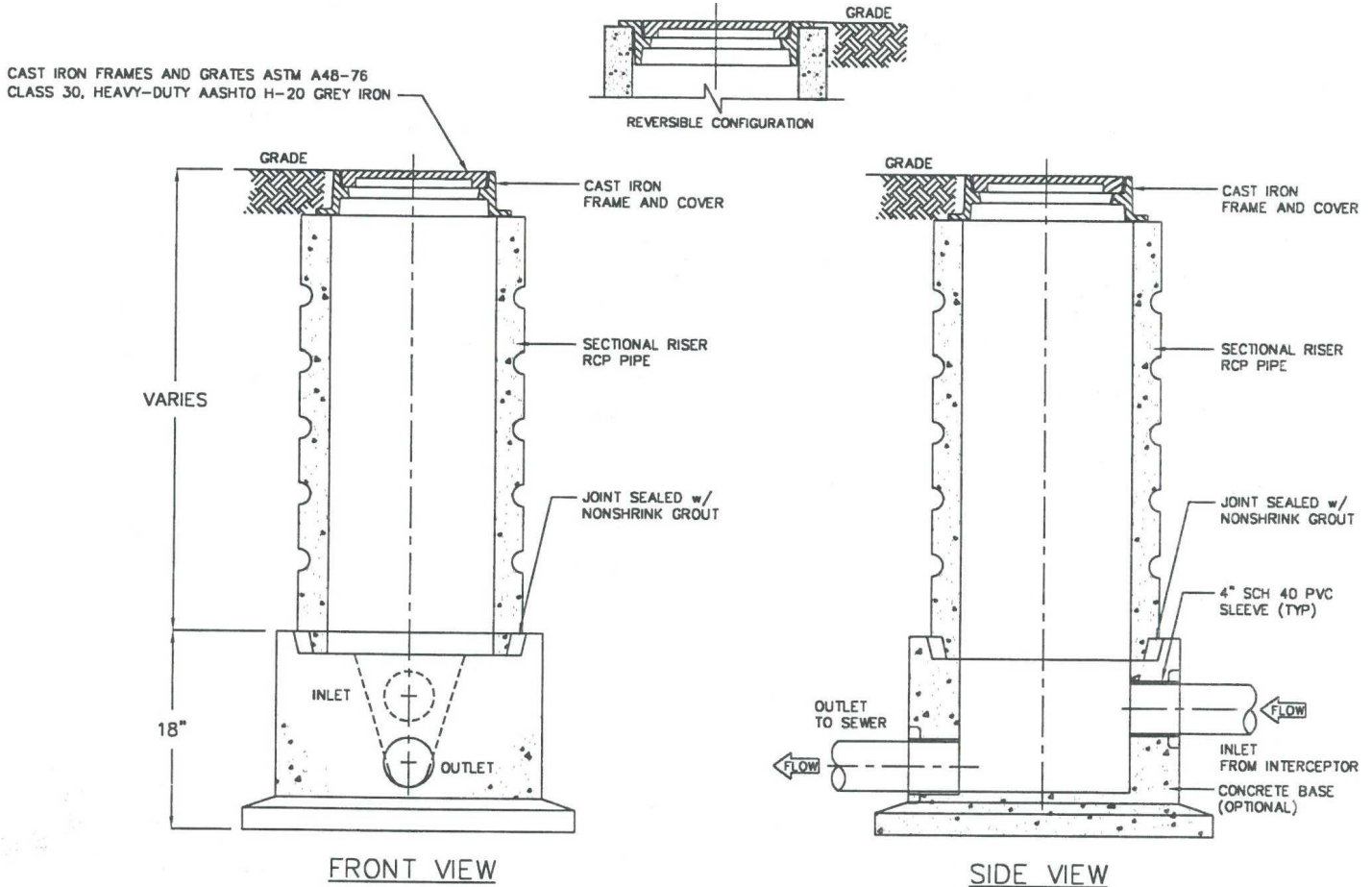


STANDARD SAMPLE WELL DETAIL FOR INTERCEPTORS



Note:

1. Use 15" T&G R.C.P. for installation 6'-0" deep and less.
2. Use 24" T&G R.C.P. for installation greater than 6'-0" deep (STD ring and MH cover required).
3. Sampling well must be set in a circular or square concrete pad (1'-0" greater than outside diameter of pipe).
4. Installation inside building must be poured in place (15" minimum). No concrete pipe is permitted (air tight cover required).
5. Lawn installation - Must be 4" above finished grade.
6. Drive and sidewalk installation - Must be brought to finish grade.
7. Must be installed on private property, in an accessible location to City personnel.
8. Class C concrete with a design strength of 4500 PSI at 28 days. Base unit is of monolithic construction at floor and first stage of wall with sectional riser to required depth.

